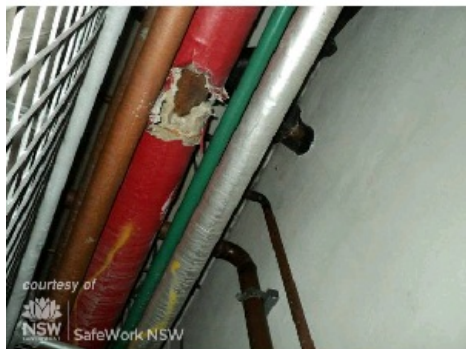


## Product: Lagging used on pipes and boilers

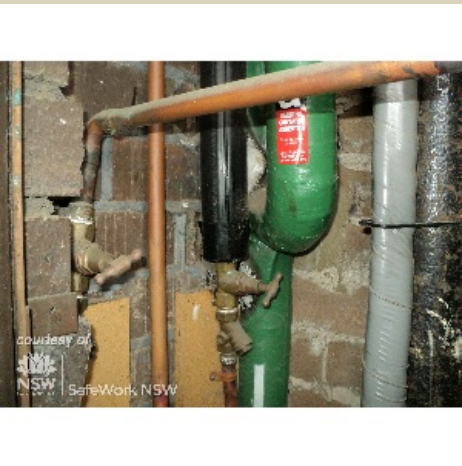
<b>Product Name</b>	Lagging used on pipes and boilers
<b>Product type</b>	Loose Insulation (referred to as lagging)
<b>Sub-Product type</b>	
<b>Trading name(s)</b>	
<b>Other name(s)</b>	
<b>Product description</b>	Thermal insulation for pipes, boilers and furnaces - normally at high temperatures.
<b>Build element</b>	Various manufacturing industries, construction
<b>Product identification</b>	
<b>Known uses</b>	Thermal insulation for pipes, boilers and furnaces - normally at high temperatures.
<b>Asbestos fibre type</b>	Amosite (brown asbestos)
<b>Friable or Non-Friable</b>	Friable
<b>Known Supplier(s)</b>	
<b>Known place of manufacture</b>	
<b>Date / period of manufacture</b>	Pre 1987
<b>Building construction period</b>	1951-1960,1961-1970,1970-1980,1981-1990
<b>Location</b>	<b>Commercial</b> <ul style="list-style-type: none"> <li>Plant</li> <li>Plumbing</li> </ul> <b>Industrial</b> <ul style="list-style-type: none"> <li>Plant</li> <li>Plumbing</li> </ul> <b>Marine</b> <b>Plant</b>
<b>Product images</b>	



WCNSW\_DSC09.jpg

<b>Name</b>	Pipe Lagging in poor condition
<b>Caption</b>	Asbestos containing pipe lagging in poor condition
<b>Location</b>	Commercial

Source	SafeWork NSW
Image Id	189



WCNSW\_DSC01171.jpg

Name	Pipework Lagging
Caption	Pipework Insulation-Lagging in Fire Hydrant Cupboard
Location	Commercial
Source	SafeWork NSW
Image Id	190



WCNSW\_DSC03587.jpg

Name	Asbestos rope lagging
Caption	Asbestos containing rope lagging on pipework in engine room.
Location	Plant
Source	SafeWork NSW
Image Id	191



WCNSW\_DSC04399.jpg

Pipe Lagging in poor condition

<b>Name</b>	
<b>Caption</b>	Asbestos containing pipe lagging in poor condition beneath a steam platform
<b>Location</b>	Plant
<b>Source</b>	SafeWork NSW
<b>Image Id</b>	192



WCNSW\_IMGP3234opt.jpg

<b>Name</b>	Asbestos containing lagging
<b>Caption</b>	Exterior body boiler with internal insulation exposed from a steam locomotive
<b>Location</b>	Plant
<b>Source</b>	SafeWork NSW
<b>Image Id</b>	193



1877.jpg

<b>Name</b>	Steam pipe with lagging
<b>Caption</b>	Steam pipe that was wrapped with asbestos lagging and within a secondary metal pipe. The “whitish” material that can be seen to the right of the vertical pipe through the corroded space is a clump of lagging that has become friable
<b>Location</b>	Industrial
<b>Source</b>	SHAPE Group
<b>Image Id</b>	266



Pipe lagging service cupboard1.jpg

<b>Name</b>	Pipe lagging
<b>Caption</b>	Pipe lagging service cupboard
<b>Location</b>	Domestic home
<b>Source</b>	Jim's Building Inspections
<b>Image Id</b>	272



Pipe lagging service cupboard2.jpg

<b>Name</b>	Pipe lagging
<b>Caption</b>	Pipe lagging service cupboard with exposed asbestos
<b>Location</b>	Commercial
<b>Source</b>	Jim's Building Inspections
<b>Image Id</b>	273



Pipe lagging service cupboard3.jpg

<b>Name</b>	Pipe lagging in cupboard
<b>Caption</b>	Pipe lagging in cupboard
<b>Location</b>	Commercial

Source	Jim's Building Inspections
Image Id	281

---

