

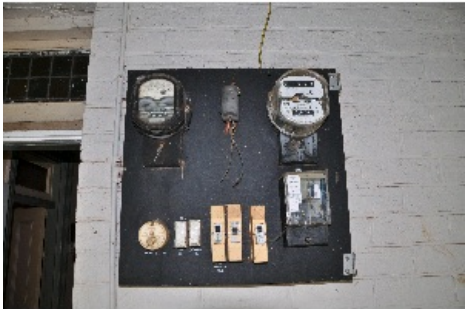
## Product: Bituminous Electrical Backing Board

|                                     |   |
|-------------------------------------|---|
| <b>Product Name</b>                 | Bituminous Electrical Backing Board   |
| <b>Product type</b>                 | Electrical Insulation   |
| <b>Sub-Product type</b>             |   |
| <b>Trading name(s)</b>              | Lebah<br>Miscolite<br>Ausbestos<br>Zelemite   |
| <b>Other name(s)</b>                | LV board, power board, electrical boards, electrical switchboard panels   |
| <b>Product description</b>          | Backing boards are commonly used as the mounting base for switchboards, protection panels, street lighting panels, auxiliary power boards, etc. They are usually fixed to a steel construction which is attached to the floor and walls of the substation. Fuses, links, protection relays, control relays, contactors, small circuit breakers, meters, MDI and other electrical equipment is installed on backing boards. They are hard, stiff and dark in colour. |
| <b>Build element</b>                |   |
| <b>Product identification</b>       | The backing boards are usually a dark brown or black colour, have a rough fibrous or wood like surface finish and may have a strong tar smell about them. Brand names such as Lebah, Zelemite, Miscolite and Ausbestos may be stamped on the rear of the backing boards. If your meter board has been identified by your electrical company as potentially containing asbestos, then a caution sticker may have been placed on the board or inside your meter box.  |
| <b>Known uses</b>                   | The mounting base for switchboards, protection panels, street lighting panels, auxiliary power boards, etc  |
| <b>Asbestos fibre type</b>          | Amosite (brown asbestos)<br>Chrysotile (white asbestos)   |
| <b>Friable or Non-Friable</b>       | Non-Friable   |
| <b>Known Supplier(s)</b>            |   |
| <b>Known place of manufacture</b>   |   |
| <b>Date / period of manufacture</b> | Pre 1987  |
| <b>Building construction period</b> | 1900-1920, 1921-1930, 1931-1940, 1941-1950, 1951-1960, 1961-1970, 1970-1980, 1981-1990, Pre 1900  |
| <b>Location</b>                     | <b>Domestic home</b> <ul style="list-style-type: none"> <li>Bathroom</li> <li>Dining room</li> <li>Dog kennels</li> <li>Electrical</li> <li>Exterior</li> <li>Power box</li> </ul> <b>Commercial</b> <ul style="list-style-type: none"> <li>Electrical</li> </ul>   |

Industrial

- Electrical

|                |  |
|----------------|--|
| Product images |  |
|----------------|--|



025 Asbestos Power Boards\_.jpg

|          |   |
|----------|---|
| Name     | Asbestos Power Board 025  |
| Caption  | Bituminous backing board for electrical switchboard without warning - Zelemite. The fuse on the lower left side also contains friable asbestos inside the fuse carrier. |
| Location | Domestic home   |
| Source   | Asbestos Education Committee  |
| Image Id | 61  |



108 Asbestos Power Boards\_.jpg

|          |  |
|----------|--|
| Name     | Asbestos Power Board 108   |
| Caption  | Bituminous backing board for electrical switchboard without warning - Zelemite |
| Location | Domestic home  |
| Source   | Asbestos Education Committee   |
| Image Id | 62   |



111 Asbestos Power Boards\_.jpg

**Name** Asbestos Power Board 111

**Caption** Bituminous backing board for electrical switchboard with warning - Zelemite

**Location** Domestic home

**Source** Asbestos Education Committee

**Image Id** 63



114 Asbestos Power Boards\_.jpg

**Name** Asbestos Power Board 114

**Caption** Bituminous backing board for electrical switchboard with warning - Zelemite. The 'Federal fuses may also contain friable asbestos.

**Location** Domestic home

**Source** Asbestos Education Committee

**Image Id** 64



0116 Asbestos Power Boards\_.jpg

**Name** Asbestos Power Board 116

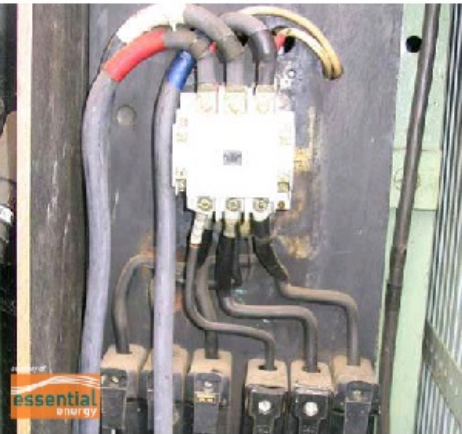
**Caption** Bituminous backing board for electrical switchboard with warning - Zelemite

|                 |                              |
|-----------------|------------------------------|
| <b>Location</b> | Domestic home                |
| <b>Source</b>   | Asbestos Education Committee |
| <b>Image Id</b> | 65                           |



LV Distribution Board.jpg

|                 |  |
|-----------------|--|
| <b>Name</b>     | LV Distribution Board  |
| <b>Caption</b>  | Lebah low voltage distribution board made of bituminous backing board. |
| <b>Location</b> | Other  |
| <b>Source</b>   | Essential Energy   |
| <b>Image Id</b> | 311  |



Street Light Control Point (SLCP).jpg

|                 |   |
|-----------------|---|
| <b>Name</b>     | Street Light Control Point  |
| <b>Caption</b>  | Street Light Control Point (SLCP) may be constructed from bituminous board. |
| <b>Location</b> | Industrial  |
| <b>Source</b>   | Essential Energy  |
| <b>Image Id</b> | 312   |

