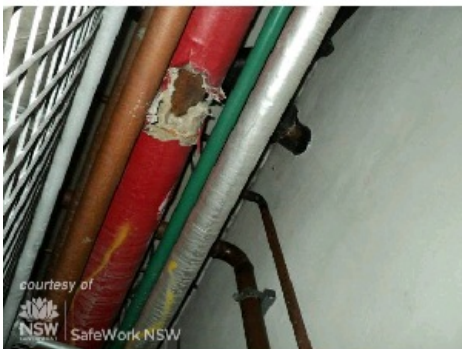


## Product: Lagging used on pipes and boilers

<b>Product Name</b>	Lagging used on pipes and boilers
<b>Product type</b>	Loose Insulation (referred to as lagging)
<b>Sub-Product type</b>	
<b>Trading name(s)</b>	
<b>Other name(s)</b>	
<b>Product description</b>	Thermal insulation for pipes, boilers and furnaces - normally at high temperatures.
<b>Build element</b>	Various manufacturing industries, construction
<b>Product identification</b>	
<b>Known uses</b>	Thermal insulation for pipes, boilers and furnaces - normally at high temperatures.
<b>Asbestos fibre type</b>	Amosite (brown asbestos)
<b>Friable or Non-Friable</b>	Friable
<b>Known Supplier(s)</b>	
<b>Known place of manufacture</b>	
<b>Date / period of manufacture</b>	Pre 1987
<b>Building construction period</b>	1951-1960,1961-1970,1970-1980,1981-1990
<b>Location</b>	<p><b>Commercial</b></p> <ul style="list-style-type: none"> <li>• Plant</li> <li>• Plumbing</li> </ul> <p><b>Industrial</b></p> <ul style="list-style-type: none"> <li>• Plant</li> <li>• Plumbing</li> </ul> <p><b>Marine</b></p> <p><b>Plant</b></p>
<b>Product images</b>	



WCNSW\_DSC09.jpg

<b>Name</b>	Pipe Lagging in poor condition
<b>Caption</b>	Asbestos containing pipe lagging in poor condition
<b>Location</b>	Commercial

**Source** SafeWork NSW

**Image Id** 189



WCNSW\_DSC01171.jpg

**Name** Pipework Lagging

**Caption** Pipework Insulation-Lagging in Fire Hydrant Cupboard

**Location** Commercial

**Source** SafeWork NSW

**Image Id** 190



WCNSW\_DSC03587.jpg

**Name** Asbestos rope lagging

**Caption** Asbestos containing rope lagging on pipework in engine room.

**Location** Plant

**Source** SafeWork NSW

**Image Id** 191



WCNSW\_DSC04399.jpg

Pipe Lagging in poor condition

<b>Name</b>	
<b>Caption</b>	Asbestos containing pipe lagging in poor condition beneath a steam platform
<b>Location</b>	Plant
<b>Source</b>	SafeWork NSW
<b>Image Id</b>	192



WCNSW\_IMG3234opt.jpg

<b>Name</b>	Asbestos containing lagging
<b>Caption</b>	Exterior body boiler with internal insulation exposed from a steam locomotive
<b>Location</b>	Plant
<b>Source</b>	SafeWork NSW
<b>Image Id</b>	193



1877.jpg

<b>Name</b>	Steam pipe with lagging
<b>Caption</b>	Steam pipe that was wrapped with asbestos lagging and within a secondary metal pipe. The "whitish" material that can be seen to the right of the vertical pipe through the corroded space is a clump of lagging that has become friable
<b>Location</b>	Industrial
<b>Source</b>	SHAPE Group
<b>Image Id</b>	266



Pipe lagging service cupboard1.jpg

<b>Name</b>	Pipe lagging
<b>Caption</b>	Pipe lagging service cupboard
<b>Location</b>	Domestic home
<b>Source</b>	Jim's Building Inspections
<b>Image Id</b>	272



Pipe lagging service cupboard2.jpg

<b>Name</b>	Pipe lagging
<b>Caption</b>	Pipe lagging service cupboard with exposed asbestos
<b>Location</b>	Commercial
<b>Source</b>	Jim's Building Inspections
<b>Image Id</b>	273



Pipe lagging service cupboard3.jpg

<b>Name</b>	Pipe lagging in cupboard
<b>Caption</b>	Pipe lagging in cupboard
<b>Location</b>	Commercial

<b>Source</b>	Jim's Building Inspections
<b>Image Id</b>	281

---

