

Product: Bituminous Electrical Backing Board

Product Name	Bituminous Electrical Backing Board
Product type	Electrical Insulation
Sub-Product type	
Trading name(s)	Lebah Miscolite Ausbestos Zelemite
Other name(s)	LV board, power board, electrical boards, electrical switchboard panels
Product description	Backing boards are commonly used as the mounting base for switchboards, protection panels, street lighting panels, auxiliary power boards, etc. They are usually fixed to a steel construction which is attached to the floor and walls of the substation. Fuses, links, protection relays, control relays, contactors, small circuit breakers, meters, MDI and other electrical equipment is installed on backing boards. They are hard, stiff and dark in colour.
Build element	
Product identification	
	The backing boards are usually a dark brown or black colour, have a rough fibrous or wood like surface finish and may have a strong tar smell about them. Brand names such as Lebah, Zelemite, Miscolite and Ausbestos may be stamped on the rear of the backing boards. If your meter board has been identified by your electrical company as potentially containing asbestos, then a caution sticker may have been placed on the board or inside your meter box.
Known uses	The mounting base for switchboards, protection panels, street lighting panels, auxiliary power boards, etc
Asbestos fibre type	Amosite (brown asbestos) Chrysotile (white asbestos)
Friable or Non-Friable	Non-Friable
Known Supplier(s)	
Known place of manufacture	
Date / period of manufacture	Pre 1987
Building construction period	1900-1920, 1921-1930, 1931-1940, 1941-1950, 1951-1960, 1961-1970, 1970-1980, 1981-1990, Pre 1900
Location	<p>Domestic home</p> <ul style="list-style-type: none"> • Bathroom • Dining room • Dog kennels • Electrical • Exterior • Power box <p>Commercial</p> <ul style="list-style-type: none"> • Electrical

Industrial

- Electrical

Product images



025 Asbestos Power Boards_.jpg

Name Asbestos Power Board 025

Caption Bituminous backing board for electrical switchboard without warning - Zelemite. The fuse on the lower left side also contains friable asbestos inside the fuse carrier.

Location Domestic home

Source Asbestos Education Committee

Image Id 61



108 Asbestos Power Boards_.jpg

Name Asbestos Power Board 108

Caption Bituminous backing board for electrical switchboard without warning - Zelemite

Location Domestic home

Source Asbestos Education Committee

Image Id 62



111 Asbestos Power Boards .jpg

Name Asbestos Power Board 111

Caption Bituminous backing board for electrical switchboard with warning - Zelemite

Location Domestic home

Source Asbestos Education Committee

Image Id 63



114 Asbestos Power Boards .jpg

Name Asbestos Power Board 114

Caption Bituminous backing board for electrical switchboard with warning - Zelemite. The 'Federal fuses may also contain friable asbestos.

Location Domestic home

Source Asbestos Education Committee

Image Id 64



0116 Asbestos Power Boards .jpg

Name Asbestos Power Board 116

Caption Bituminous backing board for electrical switchboard with warning - Zelemite

Location	Domestic home
Source	Asbestos Education Committee
Image Id	65



LV Distribution Board.jpg

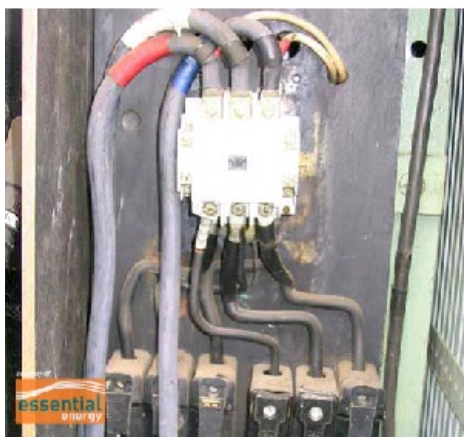
Name LV Distribution Board

Caption Lebah low voltage distribution board made of bituminous backing board.

Location Other

Source Essential Energy

Image Id 311



Street Light Control Point (SLCP).jpg

Name Street Light Control Point

Caption Street Light Control Point (SLCP) may be constructed from bituminous board.

Location Industrial

Source Essential Energy

Image Id 312

