

Product: Eaves

Product Name	Eaves
Product type	Roofing, Guttering & Exterior
Sub-Product type	
Trading name(s)	Hardiflex
Other name(s)	
Product description	Eaves are the part of a roof which meets or overhangs the walls of a building. Until the mid-late 1980s they were constructed of bonded asbestos sheeting. Signs of deterioration include discolouration, cracking or splitting.
Build element	Construction
Product identification	
Known uses	Eaves
Asbestos fibre type	Amosite (brown asbestos) Chrysotile (white asbestos) Crocidolite (blue asbestos)
Friable or Non-Friable	Non-Friable
Known Supplier(s)	James Hardie
Known place of manufacture	
Date / period of manufacture	
Building construction period	1931-1940, 1941-1950, 1951-1960, 1961-1970, 1970-1980, 1981-1990
Location	<p>Domestic home</p> <ul style="list-style-type: none"> • Bathroom • Bedroom • Dining room • Dog kennels • Exterior • Roofing & guttering <p>Agricultural</p> <p>Commercial</p> <ul style="list-style-type: none"> • Building structure • Roofing & guttering <p>Industrial</p> <ul style="list-style-type: none"> • Building structure • Roofing & guttering



0024AsbestosProduct.JPG

Name Asbestos cement eaves - maintained

Caption The asbestos cement eaves are well maintained.

Location Domestic home

Source Asbestos Education Committee

Image Id 154



0026AsbestosProduct.JPG

Name Asbestos cement eaves - maintained

Caption The asbestos cement eaves are well maintained.

Location Domestic home

Source Asbestos Education Committee

Image Id 155



0034AsbestosProduct.JPG

Name Asbestos eave and corrugated cladding

Flat asbestos cement eave and on house with corrugated asbestos cement cladding

Caption**Location** Domestic home**Source** Asbestos Education Committee**Image Id** 156

0065AsbestosProduct.JPG

Name Asbestos cement eaves - damaged**Caption** Asbestos cement eaves - HAZARD. The broken fibro has been repaired by drilling a metal plate over the broken piece. This is extremely dangerous as drilling releases fibres directly into the face of the renovator.**Location** Domestic home**Source** Asbestos Education Committee**Image Id** 157

AAD WCS 026.JPG

Name Eaves and Exterior Cladding**Caption** Asbestos Cement eaves and exterior cladding**Location** Domestic home**Source** Asbestos Education Committee**Image Id** 158



AsbestosHouses 115.JPG

Name Asbestos cement eaves - maintained

Caption Hardiflex soffit sheeting with drilled diamond pattern. The asbestos cement is newly painted and well maintained.

Location Domestic home

Source Asbestos Education Committee

Image Id 159



AsbestosHouses 298.JPG

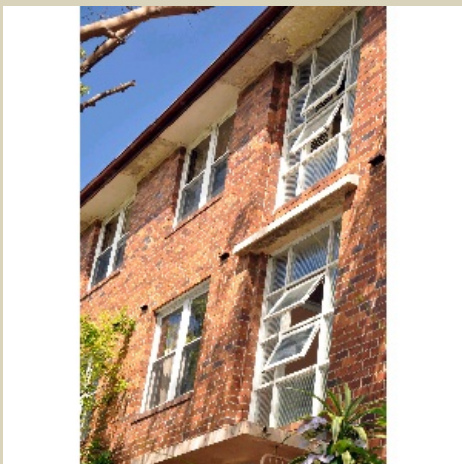
Name Fibro Eaves - Brick apartments

Caption 1970s brick apartment building with asbestos cement eaves in need of repair as paint has peeled exposing the asbestos cement

Location Domestic home

Source Asbestos Education Committee

Image Id 160



AsbestosHouses 299.jpg

Name Fibro Eaves - Brick apartments

Caption 1970s brick apartment building with asbestos cement eaves in need of repair as paint has peeled exposing the asbestos cement

Location Domestic home

Source Asbestos Education Committee

Image Id 161



DSC_0083.JPG

Name Asbestos cement eaves - damaged

Caption Brick home with broken fibro eaves

Location Domestic home

Source Asbestos Education Committee

Image Id 162



DSC_0084.JPG

Name Asbestos cement eaves - damaged

Caption Brick home with damaged fibro eaves

Location Domestic home

Source Asbestos Education Committee



guttering and eaves_5971.jpg

Name	Eaves with drilled diamond pattern
Caption	Hardiflex soffit sheeting with drilled diamond pattern
Location	Domestic home
Source	Asbestos Awareness
Image Id	164



Soffit - eave removal.jpg

Name	Soffit eaves
Caption	Eaves made from slotted hardi flex soffit sheeting. Asbestos sheeting machined with slits to allow air flow through to the ceiling cavity.
Location	Commercial
Source	Archive
Image Id	165



PRODUCT INFORMATION

Eaves and Accessories Asbestos Industry Association Hardie AsbestosProducts-4.pdf

Name

Caption

Location

Source

Image Id

166
