

## Product: Fire Place, Gas Heaters, Wood Fire Heaters

<b>Product Name</b>	Fire Place, Gas Heaters, Wood Fire Heaters
<b>Product type</b>	Heating
<b>Sub-Product type</b>	
<b>Trading name(s)</b>	
<b>Other name(s)</b>	
<b>Product description</b>	Asbestos containing materials were used as insulation around Fire Places, Wood Fire Heaters, within gas heaters and also as the wick in kerosene heaters.
<b>Build element</b>	Heating
<b>Product identification</b>	
<b>Known uses</b>	
<b>Asbestos fibre type</b>	Chrysotile (white asbestos)
<b>Friable or Non-Friable</b>	
<b>Known Supplier(s)</b>	
<b>Known place of manufacture</b>	
<b>Date / period of manufacture</b>	
<b>Building construction period</b>	1941-1950,1951-1960,1961-1970,1970-1980,1981-1990
<b>Location</b>	<p><b>Domestic home</b></p> <ul style="list-style-type: none"> <li>• Bathroom</li> <li>• Dining room</li> <li>• Fireplace</li> </ul> <p><b>Commercial</b></p> <ul style="list-style-type: none"> <li>• Other</li> </ul>
<b>Product images</b>	



IMG\_0294.JPG

**Name** Fireplace with AC Sheeting Close Up

<b>Caption</b>	Black painted base board of fireplace contains asbestos cement
<b>Location</b>	Domestic home
<b>Source</b>	Asbestos Education Committee
<b>Image Id</b>	324



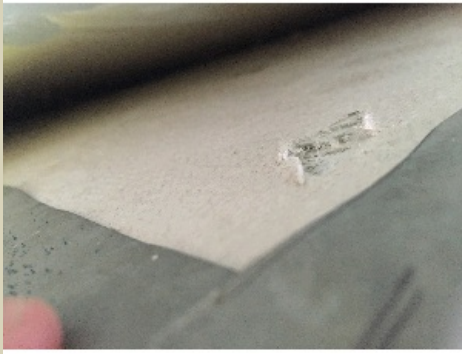
IMG\_0292.JPG

<b>Name</b>	Cast Iron Fireplace with AC Sheeting
<b>Caption</b>	Black painted base board of fireplace contains asbestos cement
<b>Location</b>	Domestic home
<b>Source</b>	Asbestos Education Committee
<b>Image Id</b>	325



IMG\_4820.jpg

<b>Name</b>	Heatproof backing sheet used to line behind fireplaces
<b>Caption</b>	It is a heatproof backing sheet used to line behind fireplaces. Found in schools and old buildings that used to have wood heaters in the corner of the room. The heater would sit on a concrete pad, and the walls were protected by these two metal sheets roughly 1m x1m screwed to the wall. The sheet itself is metal, but the edge is folded over and is backed by chrysotile containing insulation. It's protected from damage unless you pull the sheet away from the wall.
<b>Location</b>	Commercial
<b>Source</b>	Greencap
<b>Image Id</b>	329



IMG\_4822.jpg

**Name** Heatproof backing sheet used to line behind fireplaces - close up chrysotile containing insulation

**Caption** Close up of chrysotile containing insulation on a heatproof backing sheet used to line behind fireplaces. Found in schools and old buildings that used to have wood heaters in the corner of the room. The heater would sit on a concrete pad, and the walls were protected by these two metal sheets roughly 1m x1m screwed to the wall. The sheet itself is metal, but the edge is folded over and is backed by chrysotile containing insulation. It's protected from damage unless you pull the sheet away from the wall.

**Location** Commercial

**Source** Greencap

**Image** 330

**Id**

